



the Hollies
NURSING CARE HOME

Care adapted to your needs





A GENUINE SENSE OF CARE

We strive to provide the highest level of trust and genuine care.

We understand that your confidence is paramount. For your peace of mind all our carers are either qualified nurses or skilled support staff. This enables us to offer expert care to residents with a wide range of health and mobility conditions, as well as those who stay with us for respite care.

All our staff are carefully selected and we support them with their further education. So the care we offer is constantly improving and we continue to motivate and retain the best people.

The Hollies care home is accredited with the Gold Standards Framework Award (Commended) and the Holly Oak dementia care home follows the internationally recognised 'Household Model of Care' which embraces a person centred care.



OUR COMMITMENT TO YOU

We earned our reputation over many years of running one of the region's premier care homes and continue to provide 'hands on' guidance to every aspect of management at the Hollies.

The Hollies embraces the changing needs of care by offering specialised and tailored nursing, dementia and respite care as well as assisted living apartments.



“Our vision is for the Hollies to be an acclaimed centre of excellence and the benchmark for care homes in the Cotswolds.”

JONATHAN HAWKINS,
Managing Director



CHOOSING A CARE HOME

We understand that choosing a care home is a major decision.

That's why we strive every day to provide exceptional service and a trusted level of care on physical, mental and emotional needs to give you and your loved one complete confidence.

A charming ambience because being family-run touches every aspect.

At the Hollies we respect each person as an individual and aim to create a caring and supportive environment, at the same time encouraging independence and respecting dignity. We practise a holistic approach, within an inclusive, empowering and anti-discriminatory culture



Individual care

Our staff provide the highest level of nursing, residential and end of life care and every one of our residents is treated like a member of our extended family. We provide a high staff-to-patient ratio to ensure all individual care needs are met. Every resident at the Hollies has their own key caregiver who is personally responsible for ensuring that personal care plans are met and maintained 24 hours a day.

We understand that confidence is of great importance. All our caregivers are dedicated qualified nurses or skilled support. We care expertly for residents with a wide range of health and mobility conditions, as well as those who stay with us for respite care.



An extended homeliness

We aim to provide you and your family with a relaxed, happy and homely environment to live in and enjoy.

All rooms have been thoughtfully designed to ensure comfort and independence – and we will always try to accommodate personal items of furniture too. Most rooms have picturesque countryside views. Some have French doors which open on to a small patio.

We offer single room and double-sized bedrooms / suites, suitable for couples or individuals requiring more space, all with en suite bathrooms.

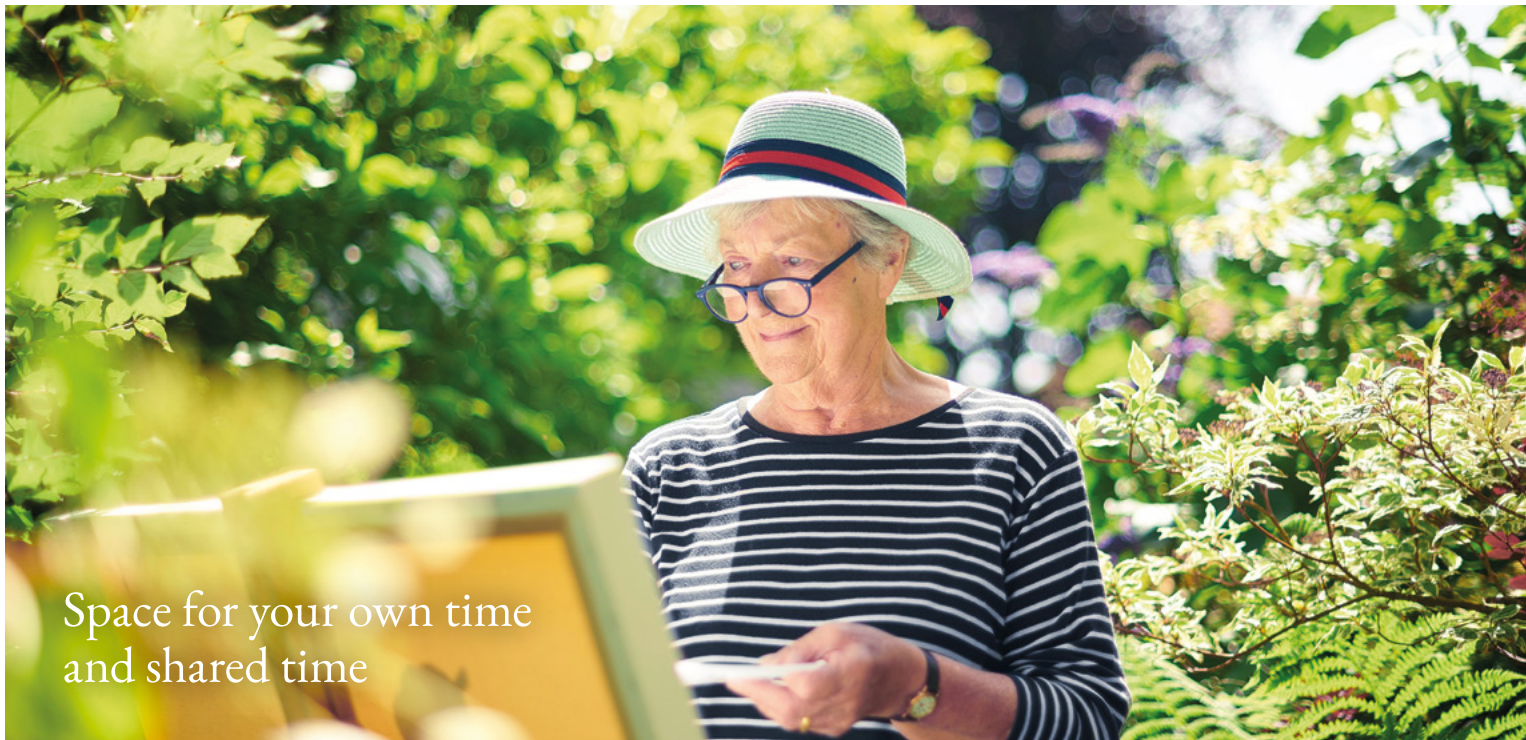
Luxuriously appointed new and spacious garden suites within the nursing care home offer those that would like the assurances of nursing care with even more space and privacy.



ALL ROOMS FEATURE

- Private walk-in wet-room shower and w.c.
- Swing-free safety door
- TV and internet
- Direct dial telephone with private number
- Nurse call system with optional infrared neck pendant
- Profiling beds





Space for your own time
and shared time



SPECIAL OCCASIONS & EVENTS

The Hollies is the perfect venue for celebrations and special events. Our warm and friendly team will go the extra mile to ensure that your occasion runs smoothly for residents and their guests.

We cater for special events including birthdays, wedding anniversaries and wakes and have a range of inviting menus to suit your needs. We are experts in catering for dietary needs, intolerances and personal preferences.

Our Local Authority five star rating makes us very proud.



HOSPITALITY

Our chefs visit all new residents to ascertain their personal preferences, dietary needs and tastes. We offer a wide and varied menu every day, complemented by a good wine list. Our head chef and her team take great pride in creating delicious and wholesome home-cooked food – using fresh local produce wherever possible.

You can choose to dine in the dining room or in your room and we welcome your guests too.



ACTIVITIES

We ensure that each resident's physical and mental well-being is cared for by pursuing their interests and hobbies that they have enjoyed in the past, or new interests that they wish to pursue in the future. Our dedicated activities team organises a wide range of engaging activities and social events every week including - for example - cheese and wine evenings, card and board games, music afternoons, visiting speakers and outings to local places of interest. There's always fun and friendship to be had.

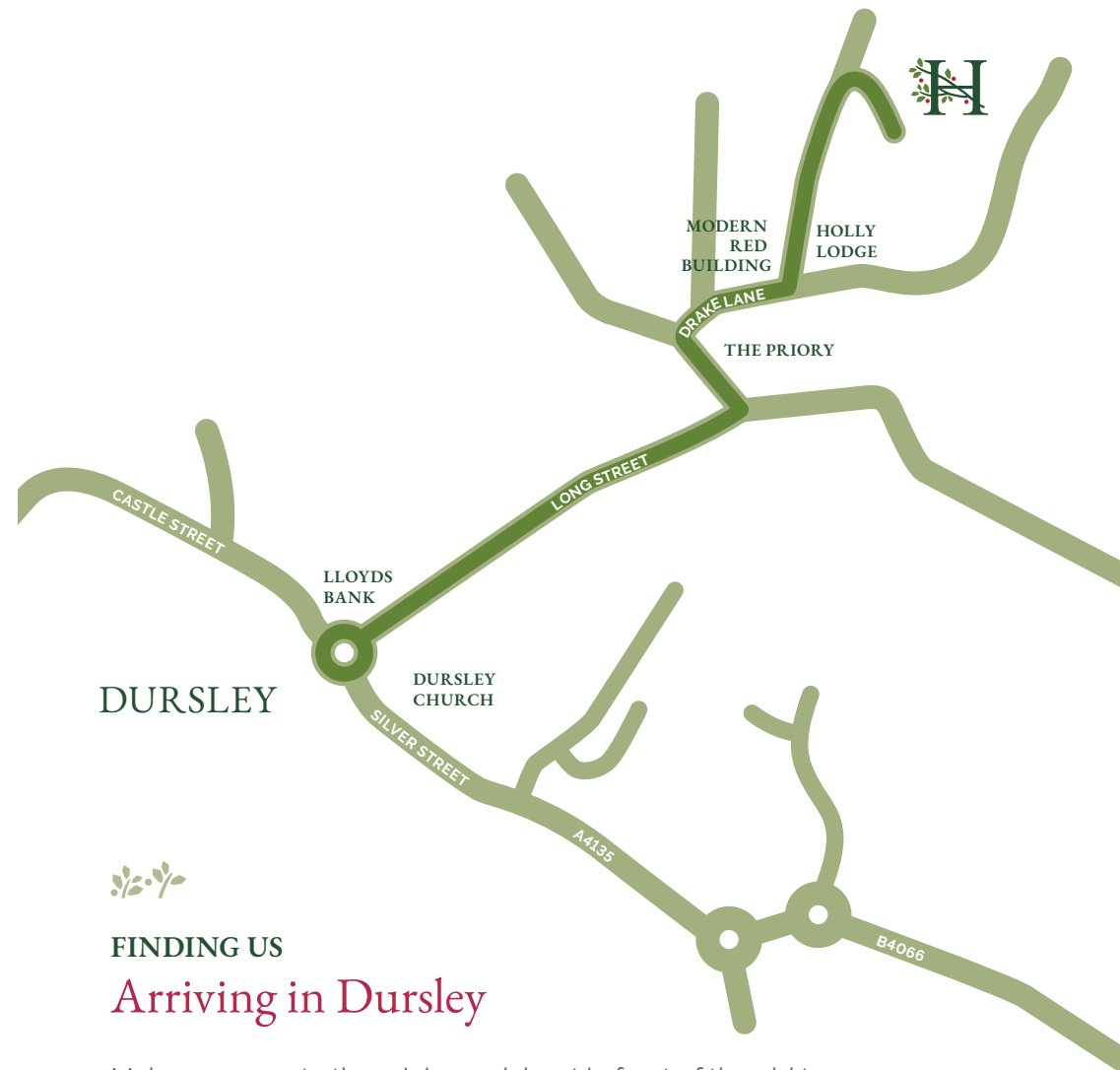


A warm and friendly environment with a lot to enjoy



ADDITIONAL FACILITIES

- Large landscaped grounds
- Terrace with views over the town
- Enclosed courtyard garden
- Elegant and comfortable lounges
- Restaurant on the ground floor and dining alternatives on the other two floors
- Quiet area for spiritual relaxation and reflection
- Treatment/consulting room
- Hairdressing salon
- Assisted bathrooms on each floor
- Two large passenger lifts
- Specially adapted minibus for outings
- Self-drive vehicle with wheelchair ramp available for medical appointments or to allow you to take your relative to private outings or appointments



FINDING US

Arriving in Dursley

Make your way to the mini roundabout in front of the old town hall and farmers market square in the centre of Dursley. Take the turning between the church and Lloyds Bank into Long Street; a short fairly narrow hill. You will soon be facing a large old cream coloured building (The Priory). Follow the bend to the left in front of The Priory and the road will then bend again to the right. You will see a large red brick modern office building (Drake House) which you pass on your left and after 30 metres turn left into our private driveway (there is a red brick house (Holly Lodge) on the corner). Follow the driveway for approximately 150 metres to arrive at **The Hollies Care Centre**.



the Hollies

NURSING CARE HOME



FURTHER INFORMATION AND ENQUIRIES

Call **01453 541400**

Email **info@thehollies.co.uk**

thehollies.co.uk

Drake Lane, Dursley GL11 5HA

The **Hollies Care Centre** comprises **the Hollies Nursing Care Home**,
Holly Oak Dementia Care Home and **Apartments by the Hollies**.

All information was correct at the time of printing.

